

Gulliver

Vertical lift

Gulliver is the ideal solution for a lift in a residential building, for the disabled or simply as a passenger lift

The system is a combination of a shaft structure with a lifting system and doors. The lift is available in several finishes depending on the installation (interior or exterior).

Gulliver helps you negotiate vertical distances of two or more storeys. With a travel height of 15.1 metres, 5 stops can be reached. The nominal load of max. 300 kg makes it possible for someone to use the system.

The wide variety of platform dimensions and door entries means the lift can be adapted to almost any situation. The dimensions of the platform make it ideal for ensuring the mobility of people with a disability. Where it is not possible to access floors via stairs, Gulliver is the appropriate and cost-effective vertical solution. The lift is available with a platform or with a cabin.



Technical Specifications:

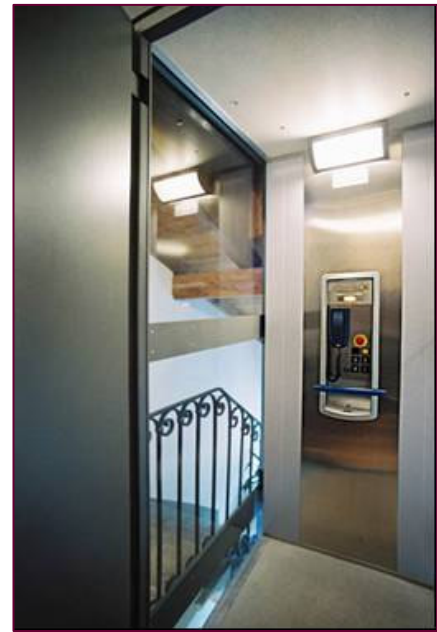
Directives:	Machine Directive 98/37/CE
Drive:	Hydraulic via oil cylinder in the shaft, with separate the generator and the hydraulic pump
Motor output:	1.5kW
Power supply:	230 V 50Hz
Speed:	max. 0.15m/sec.
Control:	Hold to run push buttons
Nominal load:	250 – 300 kg
Stops:	2-5, with 3 sides access possible
Colour:	Standard RAL colours
Pit:	140 mm, or access ramp
Transport height:	up to 15.1 metres



Platform or cabin:

- Platform: platform cover, covering the machine side
- Cabin: at additional cost, covering for the side walls
- Dimensions: from 629 to 1600 mm* on the drive side
from 795 to 1450 mm* on the other sides
- Other: handrail
emergency telephone and emergency stop button
electric emergency descent
- Operation: push button for every stop
- Options: locking for interior control
entire platform covering of stainless steel

* to be selected from the standard Gulliver dimensions



Access:

- Position: on 3 sides (incl. 90 degrees access)
- Doors: height 2000 mm*
width 600-900 mm*
- Type: without glass window, optional with narrow or large glass window
- Opening: manual, electric is optional
- Operation: call via push button in the door frame
- Options: door locking

* depending on shaft width and door position

Shaft:

- Material: galvanised steel structure, painted
- Finish: MDF wood (indoor unit), ABET plastic (outdoor unit), or Visarm 10/11 safety glass
- Shaft height: Travel height + shaft top head
- Shaft head: depending on the travel: 2400 – 2709 mm
- Cover: none, roof available at extra cost
- Dimensions: from 730 – 1600 mm on the drive side *
from 1150 – 1450 mm on the other sides *
- Pit: from 780 – 1650 mm on the drive side
from 1200 – 1500 mm on the other sides

* to be selected from the standard Gulliver dimensions



ThyssenKrupp Access
 Van Utrechtweg 99
 2921 LN
 Krimpen aan den IJssel
 The Netherlands
 Phone: +31 180 530 988
 Fax: +31 180 530 998
 E-mail: info@tka-international.com
 URL: www.tka-international.com

